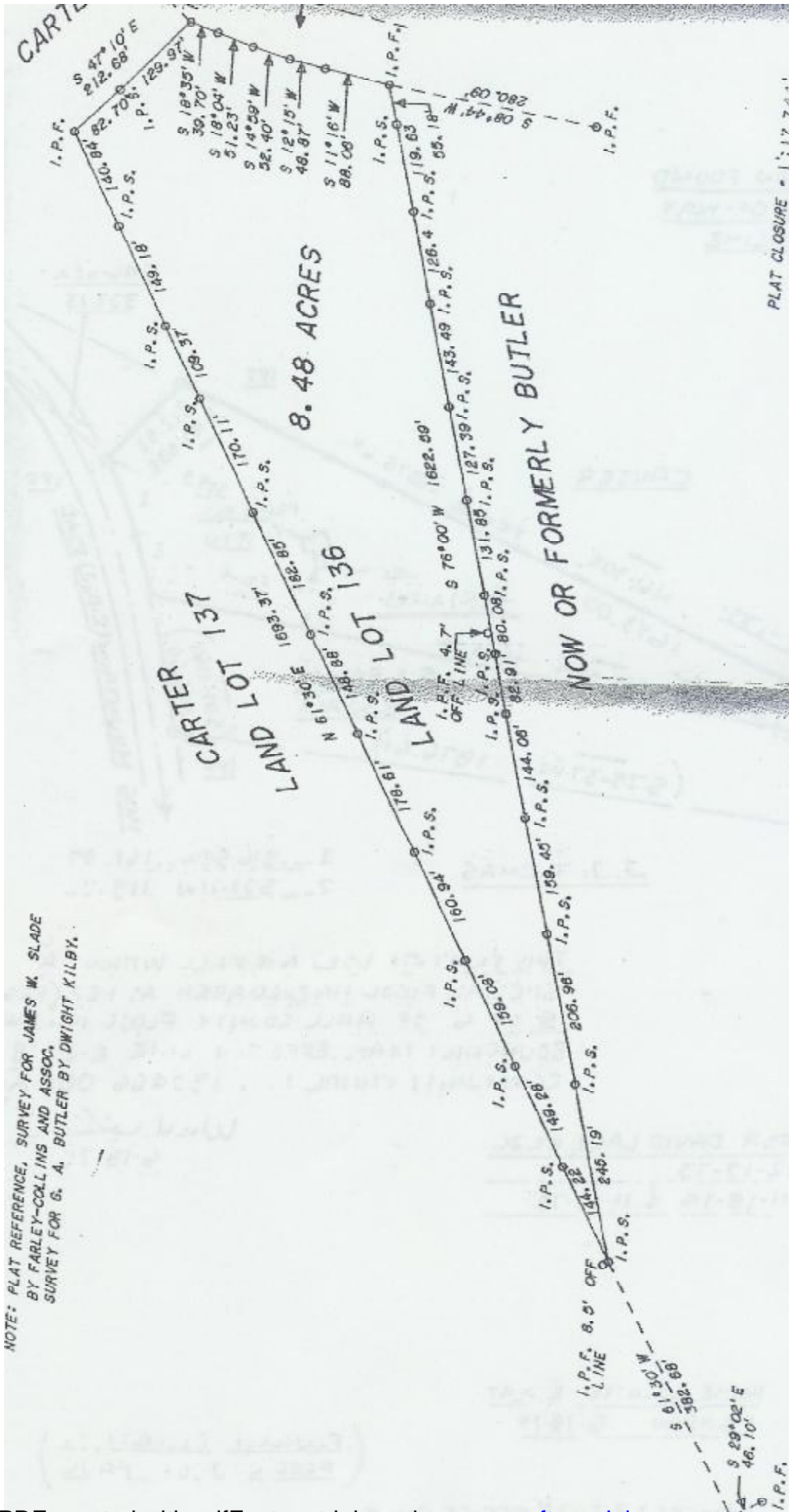


NOTE: PLAT REFERENCE, SURVEY FOR JAMES W. SLADE BY FARLEY-COLLINS AND ASSOC. SURVEY FOR G. A. BUTLER BY DWIGHT KILBY.



PLAT CLOSURE = 1:17,744'

MAP PREPARED FOR  
**DOUGLAS MCGAHA**  
**AND**  
**HELEN MCGAHA**  
 HALL COUNTY  
 GEORGIA

SURVEYOR:  
 HUBERT LOVELL  
 GA. REG. NO. 1553  
 CLARKESVILLE, GA.

CERTIFICATION:  
 IN MY OPINION, THIS PLAT  
 IS A TRUE REPRESENTATION  
 OF THE LAND PLATTED AND  
 HAS BEEN PREPARED IN  
 CONFORMITY WITH MINIMUM  
 STANDARDS AND REQUIREMENTS  
 OF LAW.

ERROR OF CLOSURE = 1:18,438'  
 ADJUSTED USING COMPASS RULE

SYMBOL  
 I.P.P.  
 C. M.

